



# Czech Republic

Eva Procházková

**Location:** central Europe

**Capital:** Prague

**Population:** 10 218 000

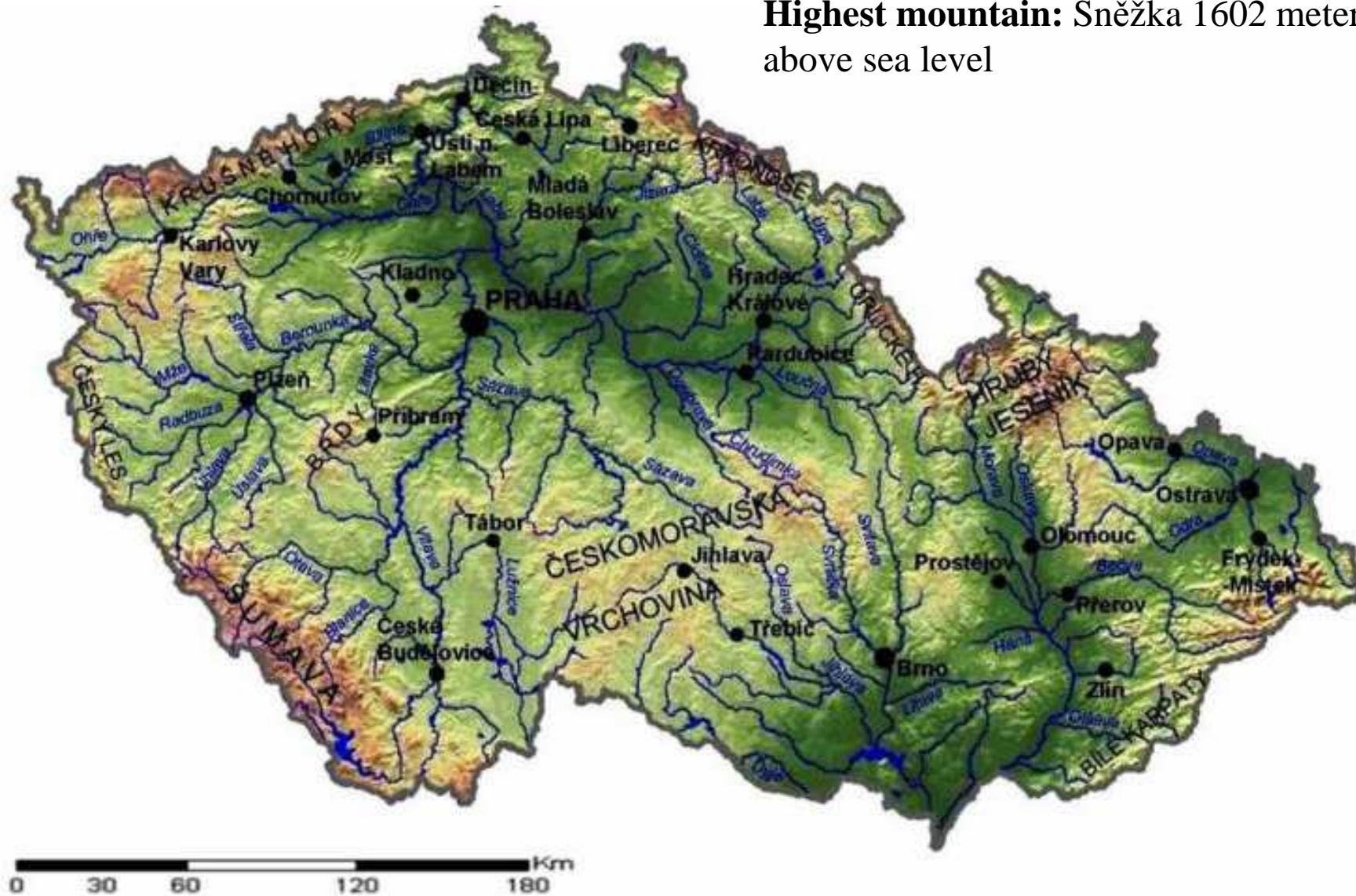
**Area:** 78 865 km<sup>2</sup>

**Climate:** temperate zone



# Geographic of the Czech Republic

**Highest mountain:** Sněžka 1602 meter above sea level





# Capital city: Prague



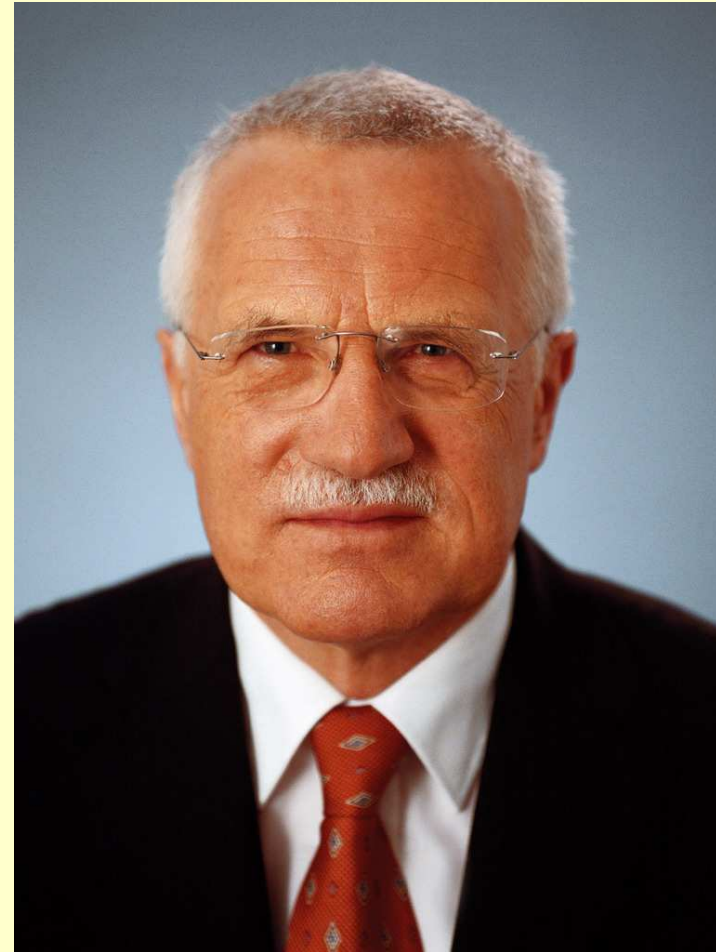
# General information

**President:** Václav Klaus

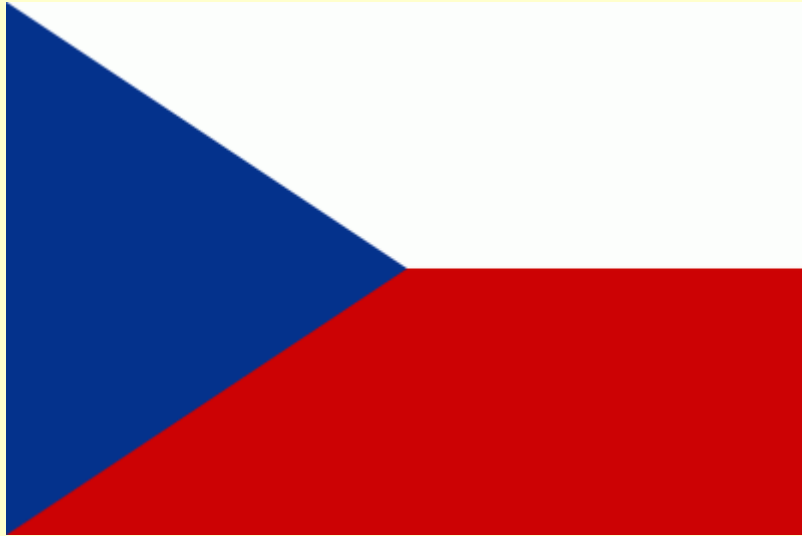
**Official language:** Czech

**Currency:** Czech crown

Member of European  
Union since 2004



# National symbol



National flag



National emblem

Anthem – Kde domov můj



# National customs and tradition



**Easter**  
- festival





# Four seasons

spring, summer, autumn, winter





# Typical Czech meals



1. fruit dumplings



2. marinated beef tenderloin



3. plum pie



4. duck with cabbage and potato dumplings

## Historical monuments (castle and chateau)







# Dialect sentences

你好

Hello

Ahoj

你如何

How are you?

Jak se máš?

謝謝

Thank you.

Děkuji.

我的名字是 Eva

My name is Eva.

Jmenuji se Eva.





謝謝

DĚKUJI ZA  
POZORNOST 😊